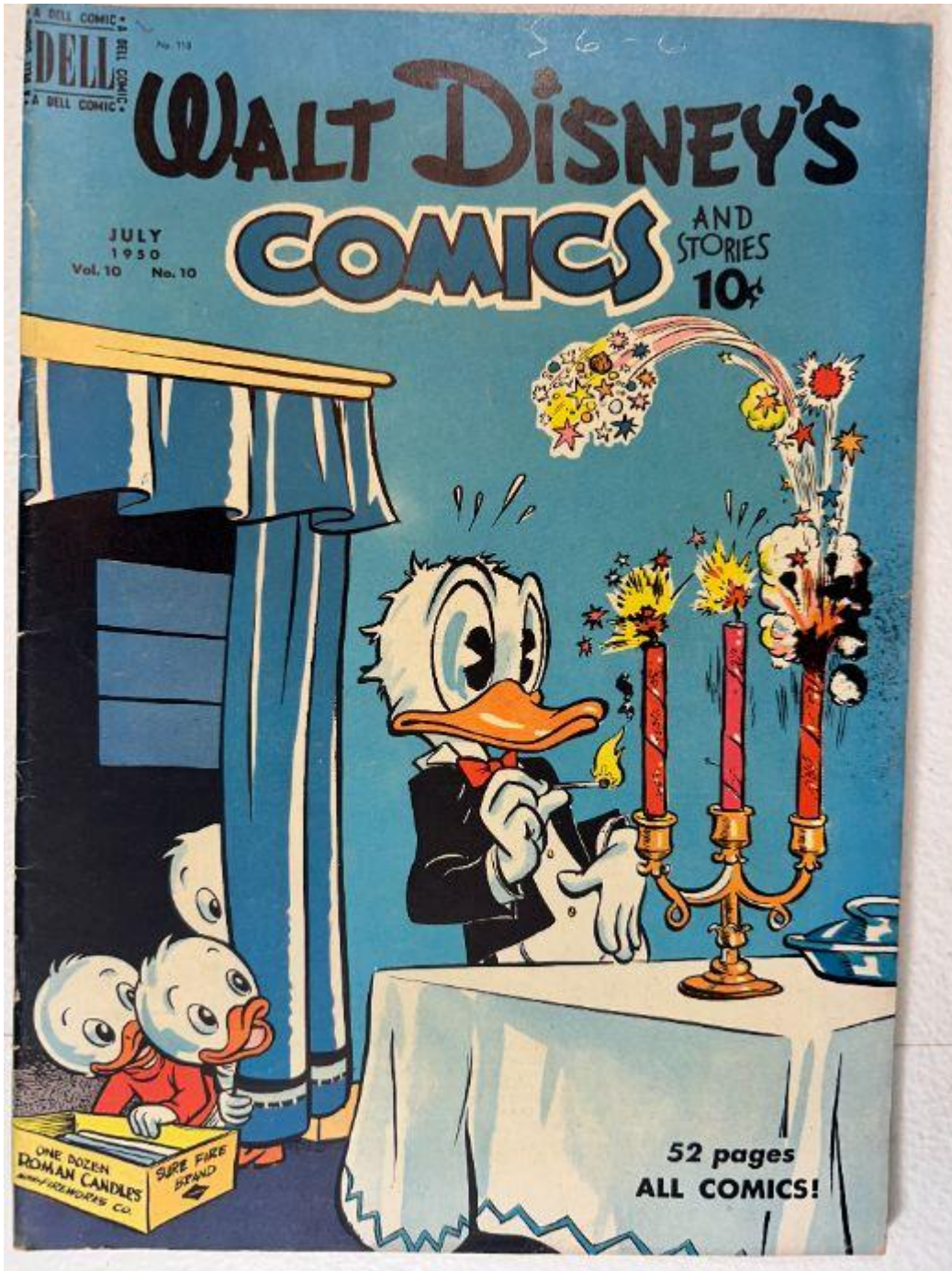


Walt Disney's Comics and Stories – Vol. 10 No. 10 (July 1950)

Evaluation Date: April 5, 2026



SUMMARY OF OBSERVATIONS

Walt Disney's Comics and Stories – Vol. 10 No. 10 (July 1950)

The front cover presents as a visually strong copy, with excellent retained blue background color and crisp, well-defined character artwork. The overall cover surface retains a smooth appearance with no large creases or breaks evident across the central fields. However, inspection reveals **localized defects** that must be explicitly documented. Most notably, **small writing is present on the front cover**, located near the upper area of the cover field, appearing as light pencil or pen marks that contrast subtly against the blue background. Additionally, minor edge wear and shallow abrasions are visible along portions of the bottom edge and spine edge, where the cover stock shows light rubbing and small surface disruptions.

Interior examination confirms that the book remains complete and intact. The inside front cover and interior pages exhibit uniform age-related toning, darker toward the margins, consistent with mid-century paper stock. No interior writing or markings are visible. The spine shows light edge wear and minor paper disturbance along the fold, but no full spine split is observed. Both staples remain present, with localized paper compression at the staple legs but no visible pull-through. The centerfold remains attached. The brittleness test image shows the paper bending smoothly without visible fiber fracture. Overall, the book presents as a strong visual copy with **excellent color** and **localized, well-defined defects** rather than widespread wear.

FRONT COVER — OBSERVATIONS

Walt Disney's Comics and Stories – Vol. 10 No. 10 (July 1950)

Photo Validation (img_2269 Front Cover)

The image is evenly lit, sharply focused, and fully frames the entire front cover, including top edge, spine, corners, and bottom edge. Resolution is sufficient to inspect ink clarity, surface wear, edge condition, and presence of writing. The photo is adequate for detailed evaluation.

Scene & Composition

The cover depicts Donald Duck standing at a table with lit candles, while Huey, Dewey, and Louie observe from behind a curtain. The scene is set against a bright blue background, with the masthead occupying the upper portion of the cover. Characters and props are centrally arranged and unobstructed.

Findings

The blue background retains strong, even color saturation across the cover, with no significant fading. The masthead lettering and character outlines remain bold and sharply printed. **Small writing is visible near the upper area of the cover**, appearing as faint handwritten marks that contrast lightly against the blue background; the writing spans approximately **~20–25 mm in total length**, with individual characters thin and shallow, suggesting light pressure. Along the bottom edge, light abrasion is visible, presenting as shallow rubbing and minor surface disruption over approximately **~15–20 mm**, without deep paper loss. The spine edge shows minor wear and rubbing, with small nicks and flattened paper fibers along a stretch of approximately **~20–25 mm**. Corners exhibit light rounding, more noticeable at the lower corners, though no corner pieces are missing. No large creases, tears, or stains are visible on the front cover.

Overall Impression

The front cover exhibits excellent color and overall surface integrity, with the primary defects limited to small writing, light edge abrasion, and minor spine wear.

BACK COVER — OBSERVATIONS

Walt Disney's Comics and Stories – Vol. 10 No. 10 (July 1950)

Photo Validation (img_2270 Back Cover)

The photograph is evenly lit, in focus, and fully shows the back cover, edges, corners, and spine edge. Image quality is sufficient for evaluating toning and wear.

Findings

The back cover shows uniform tan/cream toning consistent with age. The subscription advertisement graphics and text remain clear and legible. Light edge wear is visible along the bottom edge, with minor rubbing extending approximately **~20–25 mm**. Corner rounding is present, slightly heavier at the lower corners, though no paper loss is observed. The spine edge shows light abrasion, corresponding to the front-cover spine wear, without splitting.

Overall Impression

The back cover remains intact with even toning and minor edge and corner wear only.

A TRIPLE TREAT

IN CLEAN WHOLESOME *Entertainment!*



Free! Full-colored, long-sticking appliques are given with your subscription to **WALT DISNEY'S COMICS & STORIES**.

Subscribe Now! and get the Bondex tape with your favorite Disney character on it—ideal for decorating clothing, linens, curtains, etc.

Mail to: **K. K. PUBLICATIONS, Inc.** DEPT. 7 Poughkeepsie, N. Y.

Enclosed please find \$_____ for which please send a _____ year subscription to **WALT DISNEY'S COMICS AND STORIES** and the Free Bondex Appliques to:

PLEASE PRINT

Name _____

Street and Number _____

City or Town _____ Mailing Dist. No. _____ State _____

Donor's Name _____

Street and Number _____

City or Town _____ Mailing Dist. No. _____ State _____

SUBSCRIPTION RATES

5 years—\$4.00 3 years—\$2.50 2 years—\$1.75 1 year—\$1.00



INSIDE FRONT COVER — OBSERVATIONS

Walt Disney's Comics and Stories – Vol. 10 No. 10 (July 1950)

Photo Validation (img_2271 Inside Front Cover)

The image is straight-on, in focus, and clearly shows the full inside front cover and hinge area. Lighting allows inspection of paper condition and any markings.



Findings

The paper color is cream, lighter than the exterior covers. No writing, stamps, or subscriber markings are visible. The hinge area shows light paper compression but no tearing or separation. Margins remain intact. Indicia text is visible and legible, confirming issue identification.

Overall Impression

The inside front cover is clean, with only minor hinge stress consistent with age.

INTERIOR PAGES — OBSERVATIONS

Walt Disney's Comics and Stories – Vol. 10 No. 10 (July 1950)

Photo Validation (img_2272–img_2275 Inside Pages)

The interior page images are clear, evenly lit, and in focus, with margins, gutters, and artwork panels fully visible. The photos are adequate for evaluating page color, edge condition, and completeness.

Page Color

Cream to light tan.

Findings

Interior pages show uniform age-related toning, slightly darker toward the outer margins by approximately **~5–8 mm**. Color printing remains vivid and well defined. Minor edge waviness is visible on some pages, presenting as gentle undulation rather than creasing. Page corners show light softening, with no missing pieces. No interior writing, stains, or tears are visible. Gutters remain intact without splitting.

Overall Impression

Interior pages are complete, clean, and visually strong, with only minor age-consistent wear.







"Land sakes, I did a silly thing," Grandma Duck sputtered, as she came up Minnie's front walk, somewhat out of breath.

"What happened?" asked Minnie. "Here, let me take your hat and bundles. Now sit down in this rocking chair and tell me about it."

"I sure will," said Grandma Duck. "My garden is so pretty now that I thought I'd have a lawn party. I wrote the invitations and was coming over here to get a few addresses, from you. On the way I stopped at the market for groceries and I saw these licorice drops. Have some?" She offered Minnie the bag.

"No, thanks," replied Minnie. "But do go on with your story."

"Well, I went into the market like I said," continued Grandma Duck, "and I'd set the box of invitations down on top of a box of apples outside. Thought I'd be out again in a minute, but guess I was a mite longer. When I came out, my box was empty! Folks had been picking up the invitations as they went by. There were no names on the envelopes. So I guess I'm going to have the party—and not know who're coming until they arrive."

"Whew!" said Mickey, who was an interested listener, too. "Isn't that something. Do you want me to get some policemen?"

"Shucks, no," answered Grandma Duck. "I can take care of anything that might come up. Now that I've had

a minute to get over being cross at myself, I think it'll be right interesting. I'm going home now and polish my silver and get the house prettied up."

"But surely you won't use your best silver?" asked Minnie.

"Of course I will," said Grandma Duck. "Don't you worry a minute about anything. Just come and have a good time. Nobody ever got the best of Grandma Duck."

"I think I'll ask Chief O'Hara to come along with us, in case any scoundrels got hold of those invitations," said Mickey after Grandma Duck left.

If Mickey had been a mind reader, he couldn't have been more right, because at that minute two rascals, Honest John Foulfellow the Fox, and his companion Giddy, the Cat, were looking at the invitations.

"Ah, my deah Giddy," exclaimed the Fox, putting on airs, "society is opening its doors for us this time. Methinks at the party there might be a bit of sterling silver, or some other . . . ahem . . . bauble that we can, uh, pick up as souvenirs—and later dispose of for cash. . . ."

The Cat looked at his shabby coat and then at the Fox questioningly.

"Tut, tut," said the Fox, "we shall excuse our shabby garments by pretending we thought it was a costume party—"

And that is exactly what they did. All of the folks had arrived when the Fox and Cat strolled into Grandma

Grandma's garden
 she was so
 Grandma Duck
 Chief O'H
 Grandma Duck
 she has abuse
 had sternly. "S
 been stoler
 was a hul
 denied the
 somebody's telli





FOR ZE PARTIES I GIFF, NOTTING ISS BETTER ZAN MONEY! WOT HAFF YOU GOT?

A PLAN, YOUR MAJESTY!



A PLAN ZAT WILL LET YOU FORGET YOUR RESPONSIBILITIES, GIFF YOU PLENTY OF MONEY, LET YOU HAFF PARTIES EFERY DAY... UND NOBODY WOULD KNOW ZE DIFFERENCE!



BUT, COUNT! HOW COULD IT BE...PARTIES EFERY DAY? HOW SOON COULD I START?

AT ONCE, YOUR MAJESTY!



BUT... WINE THRONE? MINE DUTIES? MINE RESPONSIBILITIES?

DO NOT WORRY! I HAFF BRING A PERSON WHO WILL FIX IT...UND NOBODY WILL EFFER KNOW ZE DIFFERENCE!



WHO ISS ZIS MAN? IT SOUNDS LIKE MAGIC!

WE GO TO SEE HIM NOW! HIS NAME ISS MICKY MOUSE!



UND WHEN YOU MEET HIM, YOUR MAJESTY, YOU WILL SEE IT ISS NOT MAGIC... IT ISS A MIRACLE!



THEES PORTRAIT OF ME YOU HAFF HERE IN ZE LIBRAIRE... WHERE DID YOU LIKE IT, YOUR MAJESTY?

DO YOU GET HEEM?



ZE LIKENESS ISS PAIRFECT! LIKE A PHOTOGRAPH! BUT WHY DID ZE ARTIST PAINT ME IN SUCH SILLY CLOTHES?

CENTERFOLD — OBSERVATIONS

Walt Disney's Comics and Stories – Vol. 10 No. 10 (July 1950)

Photo Validation (img_2276 Centerfold)

The image clearly shows the full centerfold, staples, and fold line. Focus and lighting are sufficient for evaluating attachment.



Findings

The centerfold remains attached at both staples. The fold line shows mild compression but no tears or separation. No staple pull-through is visible.

Overall Impression

The centerfold is structurally sound and attached.

SPINE — OBSERVATIONS

Walt Disney's Comics and Stories – Vol. 10 No. 10 (July 1950)

Photo Validation (img_2277 Spine)

Side-profile image clearly shows the full spine length and adjacent cover edges, with adequate focus and lighting.



Findings

The spine shows light abrasion and rubbing along the fold, with flattened fibers and small nicks extending approximately **~20–25 mm**. No full spine split is present. Spine alignment remains straight.

Overall Impression

Spine condition is stable, with light wear only.

STAPLES — OBSERVATIONS

Walt Disney's Comics and Stories – Vol. 10 No. 10 (July 1950)

Upper Staple

Photo Validation (img_2278 Upper Staple)

Macro image is in focus and well lit, clearly showing the staple and surrounding paper.



Findings

The upper staple remains seated. Surrounding paper shows light compression and minor discoloration, extending approximately **~3–4 mm** from the staple legs. No tear or pull-through is visible.

Overall Impression

Upper staple is intact with minor localized stress.

Lower Staple

Photo Validation (img_2279 Lower Staple)

Macro image is clear and frames the staple, spine fold, and adjacent paper.

Findings

The lower staple remains embedded. Surrounding paper shows light compression similar to the upper staple, extending approximately **~3–4 mm**. No significant tearing or loss is visible.



Overall Impression

Lower staple condition is stable.

BRITTLENESS TEST — OBSERVATIONS

Walt Disney's Comics and Stories – Vol. 10 No. 10 (July 1950)

Photo Validation (img_2280 Brittleness Test)

The image clearly shows an interior page being flexed, with sufficient lighting and focus to observe paper behavior.



Findings

The page bends in a smooth arc without visible fiber cracking, flaking, or fragmentation.

Overall Impression

Tested page demonstrates retained flexibility.